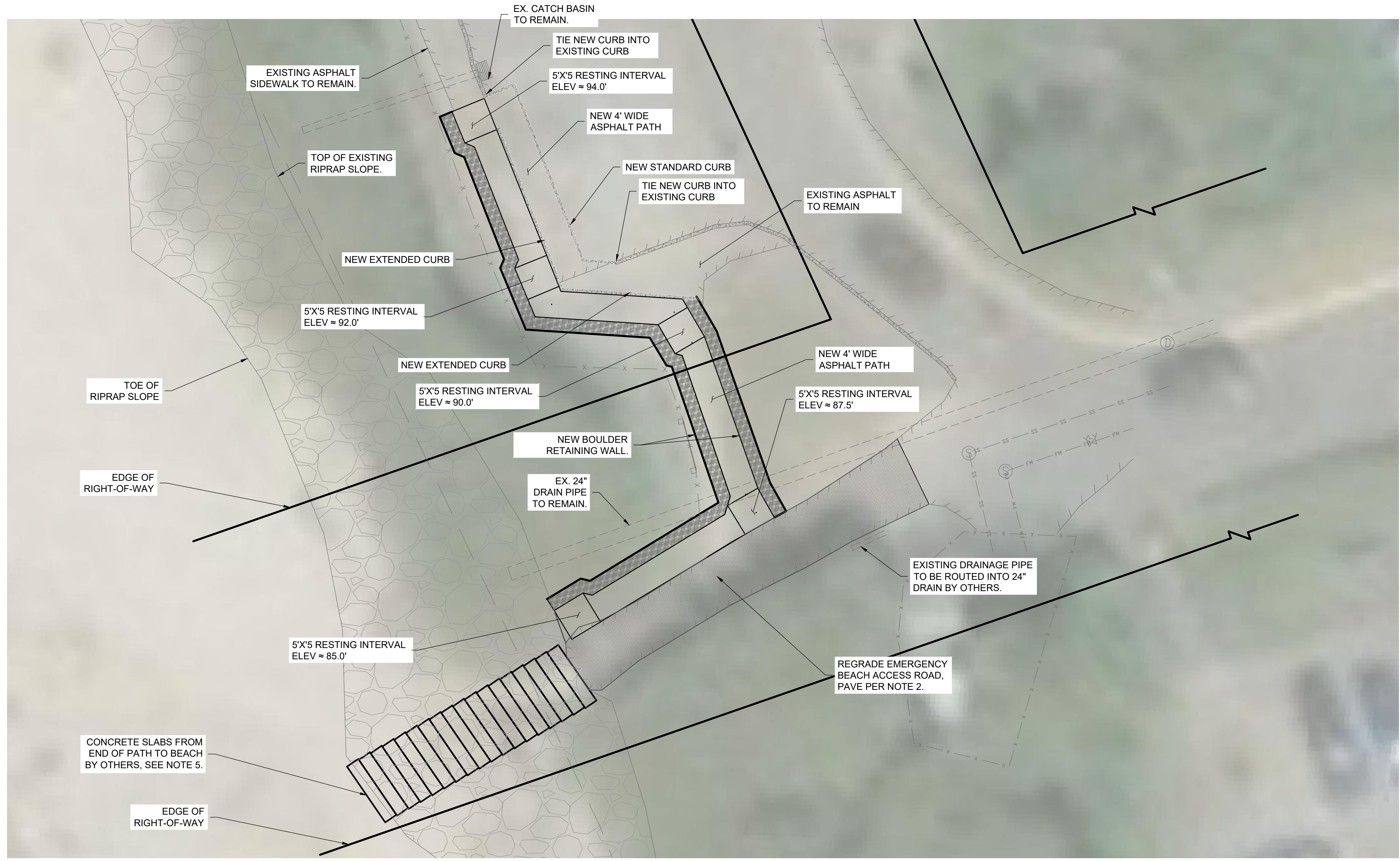


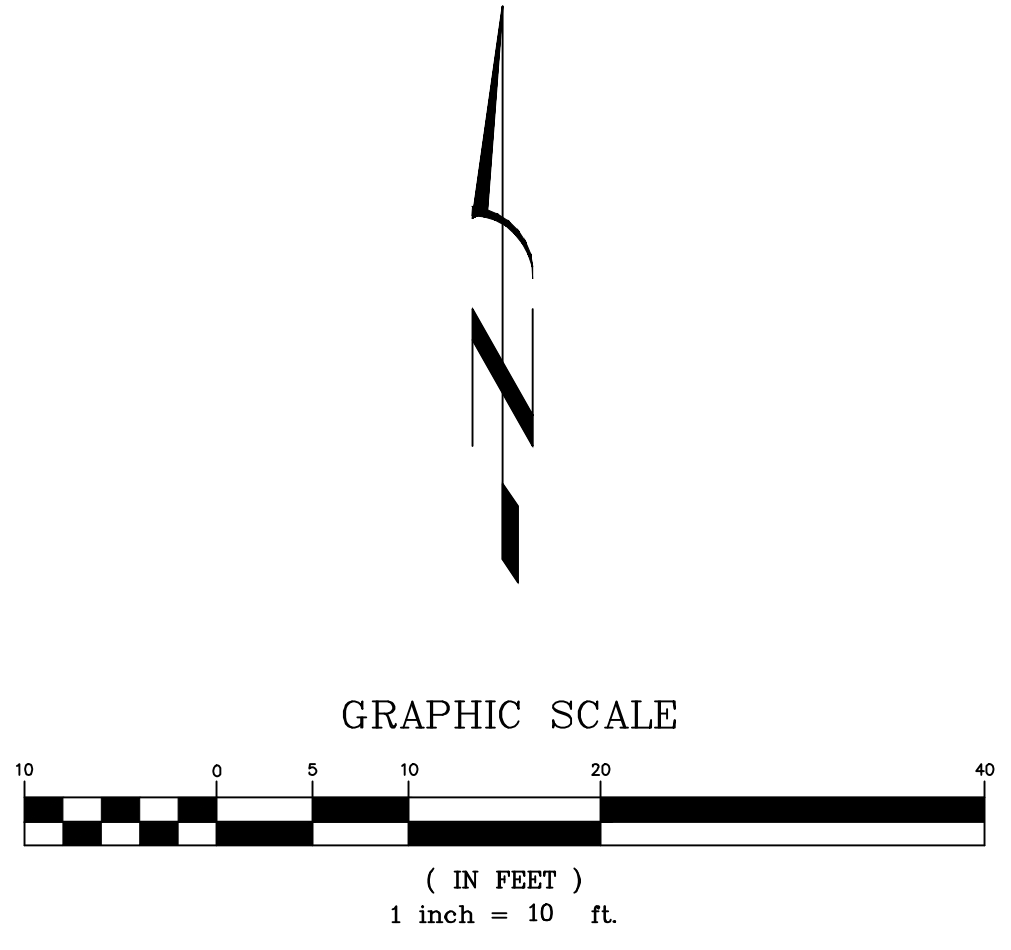
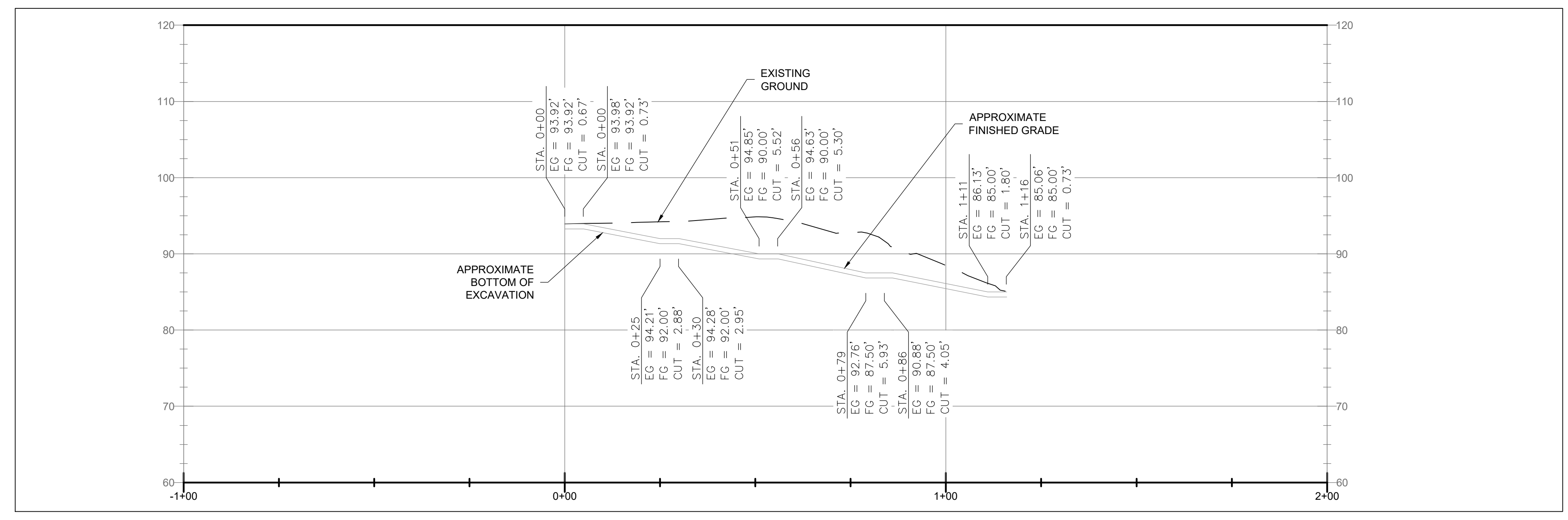
REV.	DATE	DESCRIPTION
1	10/1/2019	SHIFTED SLABS TO REMAIN IN COUNTY ROW

IF THIS LINE IS NOT 1 INCH SCALE IS NOT AS SHOWN



**OCEANSIDE BEACH ACCESS**

SCALE: 1" = 10'



- NOTES:**
- 1) NEW PATH SHALL BE CONSTRUCTED OF PCC MINIMUM 3000 PSI.
  - 2) ASPHALTIC CONCRETE (AC) PAVEMENT SHALL BE 1/2 DENSE LEVEL II HMAC AS DEFINED IN THE CURRENT OREGON STANDARD SPECIFICATIONS FOR CONSTRUCTION (OSSC).
  - 3) CRUSHED ROCK SHALL BE SIZED AS SHOWN ON PLANS AND SHALL BE AS DEFINED IN THE CURRENT OSSC.
  - 4) DESIGN BUILD ADA HANDRAIL SHALL BE COMPOSED ENTIRELY OF 316 STAINLESS STEEL OR MATERIALS RATED TO LIMIT WEATHERING AND CORROSION IN COASTAL ENVIRONMENTS WITH HIGH SALT CONTENTS IN THE AIR. GALVANIZED HANDRAILS WILL NOT BE ACCEPTED.
  - 5) CONCRETE SLABS TO BE MANUFACTURED SHIPPED, AND UNLOADED IN THE PARKING LOT. INSTALLATION OF SLABS ON THE BEACH IS NOT PART OF THIS CONTRACT. DESIGN AND INSTALLATION OF SLABS BY OTHERS.